



# OUTWEST EARTHWISE RANGE



**MAKING  
EARTHWISE MIXES  
EASY**



Sustaining the future of  
Generations to come

## **Outwest Concrete Earthwise Range**

### **Pioneering Sustainable Concrete Solutions**

Welcome to Outwest Concrete's Earthwise Collection, where sustainability meets superior performance. Our Earthwise products deliver exceptional quality while significantly reducing environmental impact. Discover how our innovative concrete solutions can transform your projects while caring for the planet.

### **What is Earthwise?**

Earthwise is our groundbreaking range of environmentally friendly concrete mixes. Designed to meet the demands of modern construction, Earthwise products offer at least 30% lower CO2 emissions compared to Ordinary Portland concrete. Our commitment to embodied carbon reduction, environmental transparency, and emissions reduction targets sets a new standard for responsible construction materials.

### **Sustainable and Economically Viable Solutions**

At Outwest Concrete, our mission is to deliver concrete solutions that are both economically viable and environmentally responsible. We partner with businesses that share our dedication to sustainable practices and environmental stewardship, ensuring that our entire supply chain aligns with our ambitious sustainability goals.

### **Innovative Decorative Concrete**

Our expertise lies in decorative concrete, where Earthwise products truly excel. These premium solutions elevate the aesthetic appeal of any project while minimising environmental impact. By utilising blended cements, recycled raw materials such as stone, brick, and sand, and eco-friendly colour pigments, we deliver exceptional, sustainable decorative concrete.



## Our Product Ranges

### 1. Earthwise

- Ideal for general applications for the eco-conscious individual.

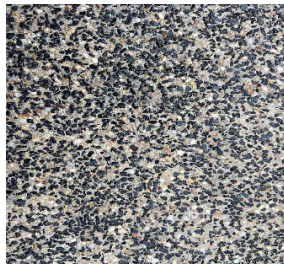
### 2. Earthwise Decorative

- Offers an extensive palette of colours and aggregates, perfect for any eco-conscious project.

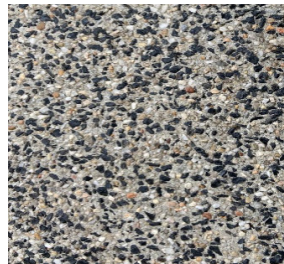
Earthwise 1



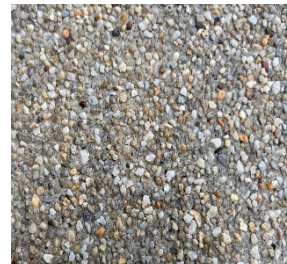
Earthwise 2



Earthwise 3



Earthwise 4



### Continuous Improvement and Innovation

At Outwest Concrete, we relentlessly pursue advancements to enhance both the aesthetic and environmental attributes of our products. Our dedicated team explores innovative methods to improve the sustainability and visual appeal of the Earthwise range, ensuring our offerings remain at the forefront of industry innovation.

### Advanced Additives for Enhanced Environmental Performance

Upon request and depending on project specifications, we can supply products featuring innovative materials such as soft plastic fibers and rubber. These materials enhance the strength, flexibility, and durability of concrete, ensuring top-tier performance while significantly reducing environmental impact.



## Versatile Applications

Outwest Concrete's environmentally friendly concrete products are adaptable and suitable for:

- Residential homes
- Commercial buildings
- Civil and infrastructure projects
- Paving projects
- Decorative concrete installations

## Councils and Municipalities

Outwest Concrete is dedicated to supporting councils and municipalities in achieving their sustainability and environmental goals. Our Earthwise products are ideal for public infrastructure projects, offering:

- **Sustainable Urban Development:** Enhance the sustainability of city projects with eco-friendly concrete solutions.
- **Durable and Long-lasting Materials:** Ensure the longevity of public structures while reducing maintenance costs.
- **Community and Environmental Benefits:** Foster a greener, healthier community with reduced CO2 emissions and recycled content.

## 1300 OUTWEST

✉ [sales@outwestconcrete.com.au](mailto:sales@outwestconcrete.com.au)

### North Sunshine

62 Maida Avenue, VIC, 3020

### Hoppers Crossing

3 Kilmarnock Court, VIC, 3029



## Environmental Benefits

- **Low Portland Cement Content:** Significantly reduces environmental impact.
- **Low Embodied Carbon:** Advances sustainable construction objectives.
- **Utilisation of Recycled Materials:** Integrates soft plastic fibres and rubber for enhanced sustainability and performance, subject to project specifications.

## Commitment to Recycling

The Earthwise range incorporates materials destined for landfills, such as blast furnace slag, recycled aggregates, recycled water, plastics, rubber, poly, and inert coloured oxides. This practice diverts waste from landfills, conserves natural resources, and reduces fossil fuel consumption associated with traditional cement production.

## Contact Us

Stay informed about our latest sustainable concrete solutions. If you have a new product idea or suggestion, we are always interested to chat more. Contact us today to discover how Outwest Earthwise can deliver environmentally responsible and visually superior solutions for your next project.

